

## Polymax Kerb Installation Guide

*We recommend the following fixings to be used with our range of kerbs or wheel stops. If you have any questions, please give our friendly sales team a call on 01420 474123.*

### High Visibility Kerb 1650L x 160W x 100H

SKU: 1058395

#### Fixing into Tarmac

Three M12 x 200mm screw with tarmac shield set (4293134).

#### Fixing into Concrete

Three M12 x 200mm screw with concrete shield set (4293133).



### Tyrecord Kerb 710L x 145W x 100H

SKU: 1058616

#### Fixing into Tarmac and Concrete

Two M16 X 180mm Bolt. The recess of the hole is 20mm deep (leaving 80mm rubber below the head of the bolt) so the anchor bolt needs to be at least 180mm long to get a good fix.



### High Visibility Kerb 900L x 150W x 95H

SKU: 6002207

#### Fixing into Tarmac

Three M12 X 100mm screw with tarmac shield set (6005109).

#### Fixing into Concrete

Three M12 x 100mm screw with concrete shield set (6005108).



**High Visibility Kerb 900L x 150W x 95H**

SKU: 6002209

Fixing into Tarmac

Three M12 X 100mm screw with tarmac shield set (6005109).

Fixing into Concrete

Three M12 x 100mm screw with concrete shield set (6005108).



**Steel Base Mounted Kerb 1200L x 250W x 160H**

SKU: 1058673

Fixing into Tarmac and Concrete

Four M16 X 125mm bolts (6001253).



**Steel Base Low Mounted Kerb 1200L x 250W x 108H**

SKU: 1058679

Fixing into Tarmac and Concrete

Two M16 X 125mm bolts (6001253).



**Rubber Extruded Kerb 660L x 100W x 100H**

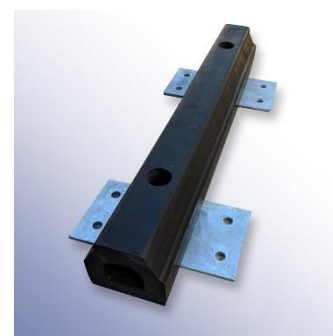
SKU: 1058674

Fixing into Tarmac

Eight M12 X 100mm screw with tarmac shield set (6005109).

Fixing into Concrete

Eight M12 x 100mm screw with concrete shield set (6005108).



Steel Kerb 25000L x 100W x 170H

SKU: 1058677

Fixing into Tarmac and Concrete

Twenty M16 X 125mm bolts (6001253).



Steel Kerb 610L x 200W x 100H

SKU: 1058678

Fixing into Tarmac and Concrete

Two M16 X 125mm bolts (6001253).



High Visibility Parking Spacer 1000L x 145W x 50H

SKU: 1058676

Fixing into Tarmac

Eight M12 X 100mm screw with tarmac shield set (6005109).

Fixing into Concrete

Eight M12 x 100mm screw with concrete shield set (6005108).

